

On the Pulse

A Publication of Onshore Companies LLC, Thibodaux, LA

Preparing the **Next Generation**

Onshore Construction Company (OCC) knows that "Tomorrow's Workforce" is not just a buzz word, but a reality for our community and industries. OCC is taking action.



During the week of December 1 through December 5, 2025, OCC partnered with local high school students in a hands-on construction training class designed to introduce career opportunities after graduation. Contractors from several trades, including plumbing, electrical, bricklaying and construction met with students to discuss real paths into the workforce.

OCC selected a fabrication and concrete form-pouring project, led by Alex Acosta with support from Hunter Prejean and Nick Ledet. The safety team also provided guidance on safe work practices and equipment operation.

This was a strong team effort. OCC plays a meaningful role in supporting and educating future workers, and this team should be recognized for its commitment to developing the next generation of the construction workforce.

The Onshore Family of Companies:

ONSHORE COMPANIES





Excited for the Year Ahead

This past year brought its share of challenges and opportunities, and none of what we achieved would have been possible without your hard work and dedication. Whether you've been with us for years or joined us more recently, I am truly grateful to have you as part of our team.

I am proud of the progress we've made and excited about what lies ahead. Let's make 2026 a great year for our entire team. Keep your focus on Communicating with Intent. Strive to be Accountable, Responsible, and Loyal. Most of all, Make It Happen Safely.

Happy New Year! -Josh Arabie

Project Updates:

SWE: Pipeline Repair

SWE assisted Whitetail construct a 40' x 20' sheet pile box in Venice, Louisiana for Crescent Midstream to make an anomaly repair on their pipeline. After mobbing to the site, we laid out mats to be able to access the repair site. Once the pipe was verified, a template was welded in place. The 50-ton marsh crane started driving the sheet pile around the template. Once all the sheets were set and welded, the marsh excavators started to excavate to get down to the next set of braces. Braces were welded in place and we continued excavating. Once the pipe was re-verified and the location was verified, UT assessed the anomaly to determine the repair method. A clamp was installed and we proceeded to backfill the sheet pile box. After backfill was completed, the braces and the sheet piles were removed.



Onshore Materials: Millennium Expansion Phase III, Port of Iberia



OM is currently working on the Millennium Expansion Phase III Dredging Project for Port of Iberia. Superintendent Shaun Michele is overseeing the project which has included clearing, grubbing, excavation, and fill placement for expansion of an existing slip within the port. Excavation of approximately 80,000 cubic yards from the new slip is being strategically placed in compacted lifts throughout the fill placement area to allow for a new client to move into the port. The crew is working ahead of schedule and this is just another example of a project across the Onshore family of companies to take place within the Port of Iberia. We look forward to working with government agencies and state entities to continue to improve their infrastructure through construction projects that lead to more commerce for the South Louisiana region.

Employee Spotlight



Lance Chamberlain
Foreman

Lance has been with Onshore for over eight months. His hobbies include hunting, fishing and spending time with family.

Lance is a very dependable, hardworking person who goes above and beyond to make sure deadlines are met.



Caleb Brunet
Operator

Caleb has been with SWE for five years. He enjoys hunting, fishing and spending time with his family. Caleb always goes above what is asked of him. He is a very valuable asset and great representative of the SWE Team. He is coachable and always willing to learn and take on new task.



Clinton Salter
Operator

Clinton Salter, known to his Onshore Materials co-workers as "Salt," is an avid Alabama football fan. Roll Tide! He also enjoys fishing in his spare time.

Salt is admired by his team who say they "want to be like him."

They know he started at the bottom and worked his way into the dozer seat. Salt is willing to help the new guys out and train them on the equipment they are running.



Rae Landry
Project Administrator

Rae has been here for over four years. She has had a variety of responsibilities dealing with equipment rentals and Onshore Construction. Today, she is taking on a new role as Project Administrator with 4 Ace Logistics.

She enjoys spending time with her family, working out and creating different types of art in her free time.

Co-workers describes Rae as, "a great listener, a quick learner and one of Onshore's best team members. She ensure that her team is running smoothly with a positive attitude and keeps them fed with her good cooking."

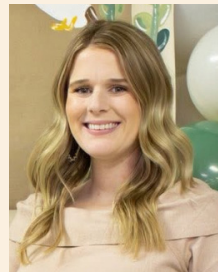


Payton Kraemer
Accounting

Payton has been a valued member of the Onshore team since 2023. She began her journey as a receptionist and has grown tremendously. Through her dedication and eagerness to learn, Payton has transitioned into a role on the Onshore Accounting Team—and her future is bright!

Her fellow team members describe Payton as helpful, dependable and always eager to grow and take on new challenges.

Outside of work, Payton enjoys spending time with her family, shopping, and watching her boyfriend at his softball games.



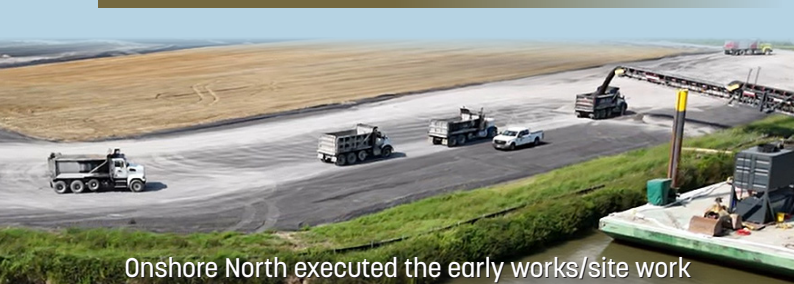
Brooke Dufrense
Project Administrator

Brooke has been with Onshore for one year. She is a team player always willing to help where she is needed.

Brooke and her family are excitedly waiting the birth of their baby boy.

Project Updates:

Onshore North: Port of Iberia



Onshore North executed the early works/site work on a new Module Assembly Yard at the Port of Iberia in south Louisiana. Onshore North's scope of work includes SWPPP, installation of RCP and rip rap, topsoil removal, excavation, imported fill, fabgrid placement, geotextile placement, and installation of limestone. This project will benefit American manufacturing and bring numerous jobs to Louisiana.

Safety First:

Each month, the Environmental Team highlights individuals who demonstrate outstanding environmental performance across the CP2 site. Behind that recognition are people who take initiative, ask questions, fix problems without being told and reinforce expectations with others. We are recognizing Don Vice and Asael Diaz whose actions supported compliance, protected the environment, and represented the type of professional conduct we expect on this project.

—Chan Dufrene, Director of Safety



ONSHORE COMPANIES



Onshore Companies, LLC
127 Lincoln Lane
Thibodaux, LA 70301

OUR MISSION:

To safely provide proven solutions to clients through strategic teamwork, partnering, and technology. We build great teams from within that serve and commit to delivering results within today's and tomorrow's economic culture.

The Onshore Family of Companies:



Onshore Construction Company, LLC



Onshore Materials, LLC



4-Aces Logistics, LLC



Shallow Water Equipment, LLC



Onshore North / OSN

4 Aces, Logistics

LNG Compressor Station

Recently, 4 Aces supplied as many as **150 dump trucks a day** hauling dirt and materials to a large-scale LNG project in Lake Charles, LA.



Scan to view the
4 Aces job site video

